



Your technology partner for cost-effective machining

UNIQ<sup>®</sup> – the new generation  
of hydraulic expansion technology

# INDUSTRIAL DESIGN WITH ADDED VALUE – UNIQ® CHUCK

The newly-developed hydraulic clamping system enables high machining parameters through excellent stability and accuracy. It minimises self-excited vibration so that clamped tools are not exposed to micro-vibration. This in turn leads to a reduced spindle load of up to 5 percent, enables a significantly longer tool life and guarantees optimal surface quality.

In addition, the brilliant surface which MAPAL creates using a specially developed polishing process ensures that the chucks are more resistant to dirt and corrosion. Users can safely clamp the tool in the holder with little force requirement. This is ensured by “foolproof handling”, i.e. simple and self-explanatory handling of the chucks. This saves a considerable amount of time compared to other clamping mechanisms, especially with the Hydro DReaM Chuck 4.5°.



## Design features in detail:

### Design philosophy

FEM supported contours for maximum rigidity with minimum use of resources

### Polished surface

Maximum resistance to corrosion and dirt

### Blue actuator screw

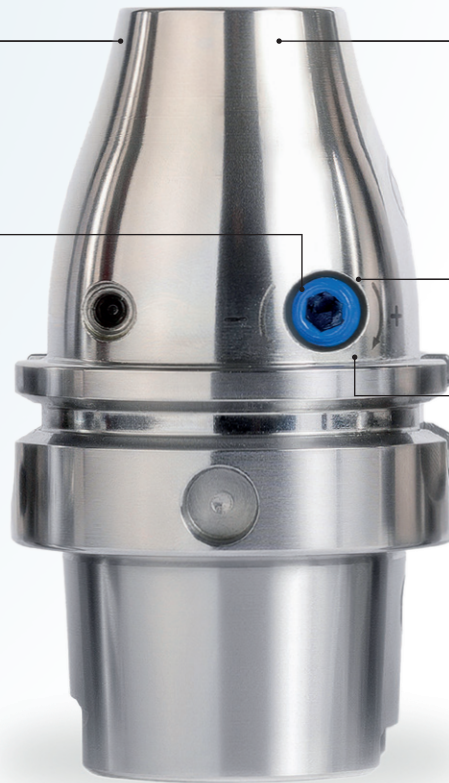
- Optical control element - foolproof  
- Reduced risk of errors and accidents

### Reduced tightening torque

- Reduction of non-productive time  
- Ergonomic handling

### Signature elements

Information on function and product



### Formal language – Bionic contours

- Higher stability and accuracy of the overall system
- Less displacement of the tool
- The tool cutting edge is constantly in intervention
- Less weight due to minimal use of resources
- Fits well in the hand when setting up the tool magazine
- Self-excited vibrations are minimized
- The tools are not exposed to micro vibrations

### Polished surfaces

- Dirt resistance (corrosion resistance) increased
- Highest balancing qualities due to compacted surfaces

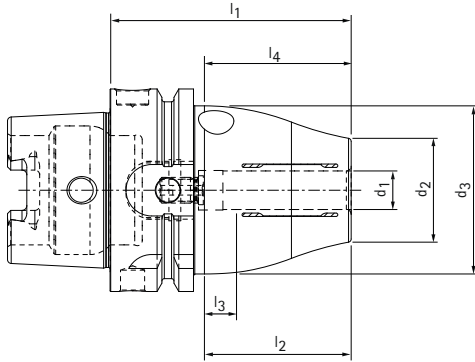
### Blue actuation screw | Signature Elements

- Clear assignment of the operating screw and easier actuation by reducing the up to 70 % reduced tightening torque of the operating screw
- Clarity of the product created, important functional and product information immediately available

# UNIQ<sup>®</sup> Mill Chuck, HA

With axial tool length adjustment

Shank hollow shank taper A according to DIN 69893-1



| HSK-A | Dimensions |       |       |       |       |       |       | G     | Torque*<br>[Nm] | Specification             | Order No. | Availability |
|-------|------------|-------|-------|-------|-------|-------|-------|-------|-----------------|---------------------------|-----------|--------------|
|       | $d_1$      | $d_2$ | $d_3$ | $l_1$ | $l_2$ | $l_3$ | $l_4$ |       |                 |                           |           |              |
| 63    | 6,0        | 26,0  | 50,0  | 65,0  | 37,0  | 10,0  | 35,2  | M5    | 22              | MHC-HSK-A063-06-065-1-0-A | 31270591  | in stock     |
| 63    | 8,0        | 28,0  | 50,0  | 65,0  | 37,0  | 10,0  | 35,2  | M6    | 47              | MHC-HSK-A063-08-065-1-0-A | 31270593  |              |
| 63    | 10,0       | 30,0  | 50,0  | 75,0  | 41,0  | 10,0  | 45,2  | M8x1  | 85              | MHC-HSK-A063-10-075-1-0-A | 31270595  |              |
| 63    | 12,0       | 32,0  | 52,5  | 75,0  | 46,0  | 10,0  | 45,2  | M8x1  | 130             | MHC-HSK-A063-12-075-1-0-A | 31229418  |              |
| 63    | 14,0       | 34,0  | 52,5  | 75,0  | 46,0  | 10,0  | 45,2  | M8x1  | 240             | MHC-HSK-A063-14-075-1-0-A | 31374670  |              |
| 63    | 16,0       | 38,0  | 52,5  | 79,0  | 49,0  | 10,0  | 49,2  | M8x1  | 350             | MHC-HSK-A063-16-079-1-0-A | 31270598  |              |
| 63    | 18,0       | 38,0  | 52,5  | 79,0  | 49,0  | 10,0  | 49,2  | M8x1  | 430             | MHC-HSK-A063-18-079-1-0-A | 31374671  |              |
| 63    | 20,0       | 38,0  | 52,5  | 79,0  | 51,0  | 10,0  | 49,2  | M8x1  | 520             | MHC-HSK-A063-20-079-1-0-A | 31229438  |              |
| 63    | 25,0       | 48,0  | 57,0  | 95,0  | 57,0  | 10,0  | 45,0  | M10x1 | 700             | MHC-HSK-A063-25-095-1-0-A | 31396170  |              |
| 63    | 32,0       | 58,5  | 62,5  | 110,0 | 61,0  | 10,0  | 56,6  | M10x1 | 900             | MHC-HSK-A063-32-110-1-0-A | 31396171  |              |
| 100   | 6,0        | 26,0  | 50,0  | 73,0  | 37,0  | 10,0  | 40,2  | M5    | 22              | MHC-HSK-A100-06-073-1-0-A | 31345192  | in stock     |
| 100   | 8,0        | 28,0  | 50,0  | 73,0  | 37,0  | 10,0  | 40,2  | M6    | 47              | MHC-HSK-A100-08-073-1-0-A | 31345193  |              |
| 100   | 10,0       | 30,0  | 50,0  | 83,0  | 41,0  | 10,0  | 50,2  | M8x1  | 85              | MHC-HSK-A100-10-083-1-0-A | 31345194  |              |
| 100   | 12,0       | 32,0  | 52,5  | 83,0  | 46,0  | 10,0  | 50,2  | M8x1  | 130             | MHC-HSK-A100-12-083-1-0-A | 31345195  |              |
| 100   | 14,0       | 34,0  | 52,5  | 83,0  | 46,0  | 10,0  | 50,2  | M8x1  | 240             | MHC-HSK-A100-14-083-1-0-A | 31345196  |              |
| 100   | 16,0       | 38,0  | 52,5  | 87,0  | 49,0  | 10,0  | 54,2  | M8x1  | 350             | MHC-HSK-A100-16-087-1-0-A | 31345197  |              |
| 100   | 18,0       | 38,0  | 52,5  | 87,0  | 49,0  | 10,0  | 54,2  | M8x1  | 430             | MHC-HSK-A100-18-087-1-0-A | 31345198  |              |
| 100   | 20,0       | 38,0  | 52,5  | 87,0  | 51,0  | 10,0  | 54,2  | M8x1  | 520             | MHC-HSK-A100-20-087-1-0-A | 31345199  |              |
| 100   | 25,0       | 56,0  | 70,0  | 95,0  | 57,0  | 10,0  | 62,2  | M10x1 | 700             | MHC-HSK-A100-25-095-1-0-A | 31345200  |              |
| 100   | 32,0       | 60,0  | 75,0  | 100,0 | 61,0  | 10,0  | 67,2  | M10x1 | 900             | MHC-HSK-A100-32-100-1-0-A | 31345201  |              |

\* Permissible transmittable torque.

Dimensions in mm.

Application: For clamping tools with smooth cylindrical shanks to DIN 1835 Form A, DIN 6535 Form HA as well as with recesses to DIN 1835 Form B, E and DIN 6535 Form HB, HE directly and with reducing sleeve in the clamping diameter. The clamping diameter is designed for a shank tolerance h6.

Scope of delivery: With length adjustment screw, without coolant tube.

Design: Highest tool life and production quality when using smooth shanks according to DIN 1835 form A and DIN 6535 form HA.

With a length of 2.5xD (max. 50 mm) concentricity 3  $\mu$ m. When using cylindrical shanks

with inclined clamping surface (form E and form HE), the accuracy may be impaired.

Torque transmission perfectly tailored to your application.

Note: Coolant supply via central through hole. Coolant tubes, code carriers, reducing sleeves for reducing the clamping diameter (when using the reducing sleeve, an impairment of the accuracy is possible) see category accessories, spare parts and measuring equipment.

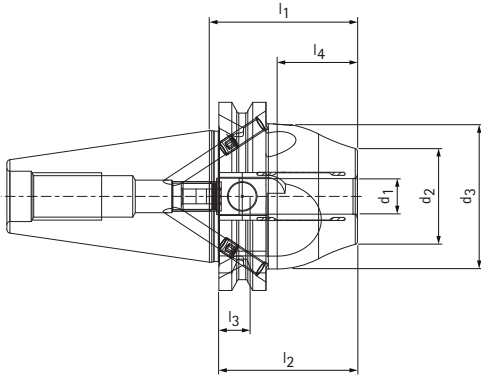
Length adjustment screws available on request.

Balance quality: G 2.5 at 25,000  $\text{min}^{-1}$  as delivered.

# UNIQ<sup>®</sup> Mill Chuck, HA

With axial tool length adjustment

Shank hollow shank taper A according to ISO 7388-1 form AD/AF



| SK | Dimensions     |                |                |                |                |                |                |                | G     | Torque *<br>[Nm] | Specification          | Order No. | Availability |
|----|----------------|----------------|----------------|----------------|----------------|----------------|----------------|----------------|-------|------------------|------------------------|-----------|--------------|
|    | d <sub>1</sub> | d <sub>2</sub> | d <sub>3</sub> | d <sub>4</sub> | l <sub>1</sub> | l <sub>2</sub> | l <sub>3</sub> | l <sub>4</sub> |       |                  |                        |           |              |
| 40 | 6,0            | 26,0           | 42,0           | -              | 50,0           | 37,0           | 10,0           | 27,1           | M5    | 22               | MHC-SK040-06-050-3-0-A | 31345212  | in stock     |
| 40 | 8,0            | 28,0           | 42,0           | -              | 50,0           | 37,0           | 10,0           | 27,1           | M6    | 47               | MHC-SK040-08-050-3-0-A | 31345213  |              |
| 40 | 10,0           | 30,0           | 42,0           | -              | 50,0           | 41,0           | 10,0           | 27,1           | M8x1  | 85               | MHC-SK040-10-050-3-0-A | 31345214  |              |
| 40 | 12,0           | 32,0           | 49,0           | -              | 50,0           | 46,0           | 10,0           | 27,1           | M10x1 | 130              | MHC-SK040-12-050-3-0-A | 31345215  |              |
| 40 | 14,0           | 34,0           | 49,0           | -              | 50,0           | 46,0           | 10,0           | 27,1           | M10x1 | 240              | MHC-SK040-14-050-3-0-A | 31374686  |              |
| 40 | 16,0           | 38,0           | 49,0           | -              | 64,5           | 49,0           | 10,0           | 41,6           | M12x1 | 350              | MHC-SK040-16-065-3-0-A | 31345216  |              |
| 40 | 18,0           | 38,0           | 49,0           | -              | 64,5           | 49,0           | 10,0           | 41,6           | M12x1 | 430              | MHC-SK040-18-065-3-0-A | 31374687  |              |
| 40 | 20,0           | 38,0           | 49,0           | -              | 64,5           | 51,0           | 10,0           | 41,6           | M16x1 | 520              | MHC-SK040-20-065-3-0-A | 31345217  |              |
| 40 | 25,0           | 48,0           | 57,0           | 49,5           | 110,0          | 57,0           | 10,0           | 65,3           | M10x1 | 700              | MHC-SK040-25-110-3-0-A | 31396178  |              |
| 40 | 32,0           | 58,5           | 62,5           | 49,5           | 115,0          | 61,0           | 10,0           | 65,5           | M12x1 | 900              | MHC-SK040-32-115-3-0-A | 31396179  |              |

\* Permissible transmittable torque.

Dimensions in mm.

Application: For clamping tools with smooth cylindrical shanks to DIN 1835 Form A, DIN 6535 Form HA as well as with recesses to DIN 1835 Form B, E and DIN 6535 Form HB, HE directly and with reducing sleeve in the clamping diameter. The clamping diameter is designed for a shank tolerance h6.

Scope of delivery: With length adjustment screw, without coolant tube.

Design: Highest tool life and production quality when using smooth shanks according to DIN 1835 form A and DIN 6535 form HA.

With a length of 2.5xD (max. 50 mm) concentricity 3 µm. When using cylindrical shanks

with inclined clamping surface (form E and form HE), the accuracy may be impaired.

Torque transmission perfectly tailored to your application.

Note: Coolant supply via central through hole. Coolant tubes, code carriers, reducing sleeves for reducing the clamping diameter (when using the reducing sleeve, an impairment of the accuracy is possible) see category accessories, spare parts and measuring equipment.

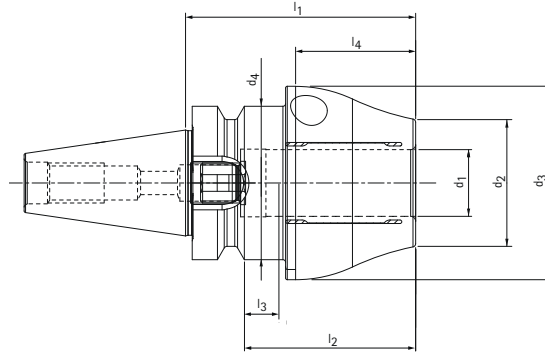
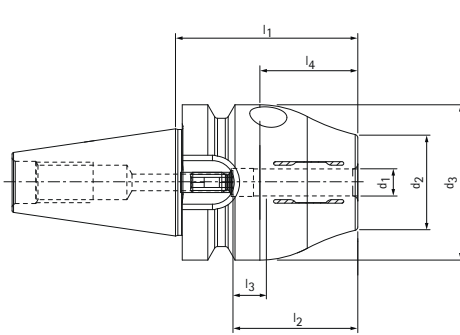
Length adjustment screws available on request.

Balance quality: G 2.5 at 25,000 min<sup>-1</sup> as delivered.

# UNIQ® Mill Chuck, HA

With axial tool length adjustment

Shank BT according to ISO 7388-2 form JD/JF (JIS B 6339)



| BT   | Dimensions     |                |                |                |                |                |                |                | G     | Torque *<br>[Nm] | Specification          | Order No. | Availability |
|------|----------------|----------------|----------------|----------------|----------------|----------------|----------------|----------------|-------|------------------|------------------------|-----------|--------------|
|      | d <sub>1</sub> | d <sub>2</sub> | d <sub>3</sub> | d <sub>4</sub> | l <sub>1</sub> | l <sub>2</sub> | l <sub>3</sub> | l <sub>4</sub> |       |                  |                        |           |              |
| 30** | 6,0            | 26,0           | 46,0           | -              | 54,0           | 37,0           | 10,0           | 29             | M5    | 22               | MHC-BT030-06-054-1-0-A | 31280342  | in stock     |
| 30** | 8,0            | 28,0           | 46,0           | -              | 54,0           | 37,0           | 10,0           | 29             | M6    | 47               | MHC-BT030-08-054-1-0-A | 31280343  |              |
| 30** | 10,0           | 30,0           | 50,0           | 46,0           | 54,0           | 41,0           | 10,0           | 23,5           | M8x1  | 85               | MHC-BT030-10-054-1-0-A | 31280344  |              |
| 30** | 12,0           | 32,0           | 50,0           | 46,0           | 54,0           | 46,0           | 10,0           | 23,5           | M10x1 | 130              | MHC-BT030-12-054-1-0-A | 31280345  |              |
| 30** | 14,0           | 38,0           | 52,0           | 46,0           | 54,0           | 46,0           | 10,0           | 21,0           | M10x1 | 240              | MHC-BT030-14-054-1-0-A | 31374678  |              |
| 30** | 16,0           | 38,0           | 55,0           | 46,0           | 69,0           | 49,0           | 10,0           | 38,5           | M12x1 | 350              | MHC-BT030-16-069-1-0-A | 31280346  |              |
| 30** | 18,0           | 38,0           | 55,0           | 46,0           | 69,0           | 49,0           | 10,0           | 36,0           | M12x1 | 430              | MHC-BT030-18-069-1-0-A | 31374679  |              |
| 30** | 20,0           | 38,0           | 58,0           | 46,0           | 69,0           | 51,0           | 10,0           | 38,5           | M12x1 | 520              | MHC-BT030-20-069-1-0-A | 31280347  |              |
| 40   | 6,0            | 26,0           | 42,0           | -              | 58,0           | 37,0           | 10,0           | 27,2           | M5    | 22               | MHC-BT040-06-058-3-0-A | 31345236  | in stock     |
| 40   | 8,0            | 28,0           | 42,0           | -              | 58,0           | 37,0           | 10,0           | 27,2           | M6    | 47               | MHC-BT040-08-058-3-0-A | 31345237  |              |
| 40   | 10,0           | 30,0           | 42,0           | -              | 58,0           | 41,0           | 10,0           | 27,2           | M8x1  | 85               | MHC-BT040-10-058-3-0-A | 31345238  |              |
| 40   | 12,0           | 32,0           | 49,0           | -              | 58,0           | 46,0           | 10,0           | 27,2           | M10x1 | 130              | MHC-BT040-12-058-3-0-A | 31345239  |              |
| 40   | 14,0           | 34,0           | 49,0           | -              | 58,0           | 46,0           | 10,0           | 27,2           | M10x1 | 240              | MHC-BT040-14-058-3-0-A | 31396154  |              |
| 40   | 16,0           | 38,0           | 49,0           | -              | 72,5           | 49,0           | 10,0           | 41,7           | M12x1 | 350              | MHC-BT040-16-073-3-0-A | 31345240  |              |
| 40   | 18,0           | 38,0           | 49,0           | -              | 72,5           | 49,0           | 10,0           | 41,7           | M12x1 | 430              | MHC-BT040-18-073-3-0-A | 31396155  |              |
| 40   | 20,0           | 38,0           | 49,0           | -              | 72,5           | 51,0           | 10,0           | 41,7           | M16x1 | 520              | MHC-BT040-20-073-3-0-A | 31345241  |              |
| 40   | 25,0           | 48,0           | 57,0           | -              | 100,0          | 57,0           | 10,0           | 44,6           | M16x1 | 700              | MHC-BT040-25-100-3-0-A | 31396156  |              |
| 40   | 32,0           | 58,5           | 62,0           | -              | 105,0          | 61,0           | 10,0           | 50,0           | M16x1 | 900              | MHC-BT040-32-105-3-0-A | 31396157  |              |

\* Permissible transmittable torque.

\*\* Design: Steep taper size is not available in combined JD/JF version.

Dimensions in mm.

Application: For clamping tools with smooth cylindrical shanks to DIN 1835 Form A, DIN 6535 Form HA as well as with recesses to DIN 1835 Form B, E and DIN 6535 Form HB, HE directly and with reducing sleeve in the clamping diameter. The clamping diameter is designed for a shank tolerance h6.

Scope of delivery: With length adjustment screw, without tightening bolt.

Design: Highest tool life and manufacturing quality when using smooth shanks according to DIN 1835 form A and DIN 6535 form HA. With an overhang length of 2.5xD (max.

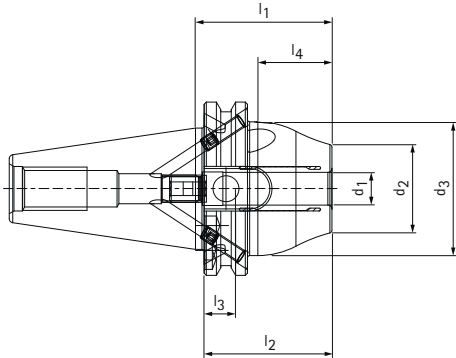
50 mm) concentricity accuracy 3 µm. When using cylindrical shanks with inclined clamping surface (form E and form HE), the accuracy may be impaired. Torque transmission perfectly tailored to your application.

Note: Coolant supply via central through hole. Tightening bolts, reducing sleeves for reducing the clamping diameter. (When using the reducing sleeve, accuracy may be impaired) see category accessories and spare parts. Length adjustment screws available on request. Balance quality: G 2.5 at 25,000 min<sup>-1</sup> as delivered.

# UNIQ<sup>®</sup> Mill Chuck, HA

With axial tool length adjustment

Shank "CAT" according to ASME B5.50-1994



| CAT | Dimensions |       |       |       |       |       |       | G     | Torque*<br>[Nm] | Specification           | Order No. | Availability |
|-----|------------|-------|-------|-------|-------|-------|-------|-------|-----------------|-------------------------|-----------|--------------|
|     | $d_1$      | $d_2$ | $d_3$ | $l_1$ | $l_2$ | $l_3$ | $l_4$ |       |                 |                         |           |              |
| 40  | 6,0        | 26,0  | 42,0  | 50,0  | 37,0  | 10,0  | 27,1  | M5    | 22              | MHC-CAT040-06-050-3-0-A | 31345224  | in stock     |
| 40  | 8,0        | 28,0  | 42,0  | 50,0  | 37,0  | 10,0  | 27,1  | M6    | 47              | MHC-CAT040-08-050-3-0-A | 31345225  |              |
| 40  | 10,0       | 30,0  | 42,0  | 50,0  | 41,0  | 10,0  | 27,1  | M8x1  | 85              | MHC-CAT040-10-050-3-0-A | 31345226  |              |
| 40  | 12,0       | 32,0  | 49,0  | 50,0  | 46,0  | 10,0  | 27,1  | M10x1 | 130             | MHC-CAT040-12-050-3-0-A | 31345227  |              |
| 40  | 14,0       | 32,0  | 49,0  | 50,0  | 46,0  | 10,0  | 27,1  | M10x1 | 240             | MHC-CAT040-14-050-3-0-A | 31374694  |              |
| 40  | 16,0       | 38,0  | 49,0  | 64,5  | 49,0  | 10,0  | 41,6  | M12x1 | 350             | MHC-CAT040-16-065-3-0-A | 31345228  |              |
| 40  | 18,0       | 38,0  | 49,0  | 64,5  | 49,0  | 10,0  | 41,6  | M12x1 | 430             | MHC-CAT040-18-065-3-0-A | 31374695  |              |
| 40  | 20,0       | 38,0  | 49,0  | 64,5  | 51,0  | 10,0  | 41,6  | M16x1 | 520             | MHC-CAT040-20-065-3-0-A | 31345229  |              |

\* Permissible transmittable torque.

Dimensions in mm.

Application: For clamping tools with smooth cylindrical shanks to DIN 1835 Form A, DIN 6535 Form HA as well as with recesses to DIN 1835 Form B, E and DIN 6535 Form HB, HE directly and with reducing sleeve in the clamping diameter. The clamping diameter is designed for a shank tolerance h6.

Scope of delivery: With length adjustment screw, without coolant tube.

Design: Highest tool life and production quality when using smooth shanks according to DIN 1835 form A and DIN 6535 form HA.

With a length of 2.5xD (max. 50 mm) concentricity 3  $\mu\text{m}$ . When using cylindrical shanks

with inclined clamping surface (form E and form HE), the accuracy may be impaired.

Torque transmission perfectly tailored to your application.

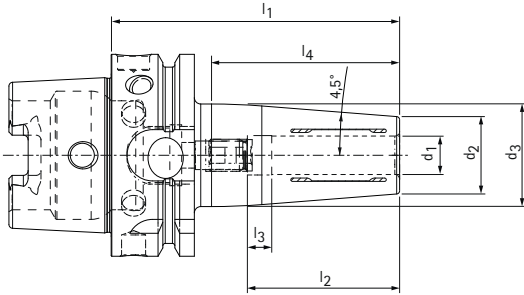
Note: Coolant supply via central through hole. Coolant tubes, code carriers, reducing sleeves for reducing the clamping diameter (when using the reducing sleeve, an impairment of the accuracy is possible) see category accessories, spare parts and measuring equipment.

Length adjustment screws available on request.

Balance quality: G 2.5 at 25,000  $\text{min}^{-1}$  as delivered.

# UNIQ® DReaM Chuck, 4.5°

With axial tool length adjustment, clamping insertion in the collar  
Shank HSK-A according to DIN 69893-1



| HSK-A | Dimensions     |                |                |                |                |                |                | G     | Torque*<br>[Nm] | Specification             | Order No. | Availability |
|-------|----------------|----------------|----------------|----------------|----------------|----------------|----------------|-------|-----------------|---------------------------|-----------|--------------|
|       | d <sub>1</sub> | d <sub>2</sub> | d <sub>3</sub> | l <sub>1</sub> | l <sub>2</sub> | l <sub>3</sub> | l <sub>4</sub> |       |                 |                           |           |              |
| 63    | 6,0            | 21,0           | 27,0           | 80,0           | 37,0           | 10,0           | 48,9           | M5    | 18              | MHC-HSK-A063-06-080-1-0-A | 31270515  | in stock     |
| 63    | 6,0            | 21,0           | 27,0           | 120,0          | 37,0           | 10,0           | 48,9           | M5    | 18              | MHC-HSK-A063-06-120-1-0-A | 31441122  |              |
| 63    | 8,0            | 21,0           | 27,0           | 80,0           | 37,0           | 10,0           | 48,9           | M6    | 35              | MHC-HSK-A063-08-080-1-0-A | 31270525  |              |
| 63    | 8,0            | 21,0           | 27,0           | 120,0          | 37,0           | 10,0           | 48,9           | M6    | 35              | MHC-HSK-A063-08-120-1-0-A | 31441123  |              |
| 63    | 10,0           | 24,0           | 32,0           | 85,0           | 41,0           | 10,0           | 53,7           | M8x1  | 60              | MHC-HSK-A063-10-085-1-0-A | 31270550  |              |
| 63    | 10,0           | 24,0           | 32,0           | 120,0          | 41,0           | 10,0           | 61,6           | M8x1  | 60              | MHC-HSK-A063-10-120-1-0-A | 31441124  |              |
| 63    | 12,0           | 24,0           | 32,0           | 90,0           | 46,0           | 10,0           | 58,6           | M10x1 | 90              | MHC-HSK-A063-12-090-1-0-A | 31229439  |              |
| 63    | 12,0           | 24,0           | 32,0           | 120,0          | 46,0           | 10,0           | 61,6           | M10x1 | 90              | MHC-HSK-A063-12-120-1-0-A | 31441125  |              |
| 63    | 14,0           | 27,0           | 34,0           | 90,0           | 46,0           | 10,0           | 57,2           | M10x1 | 130             | MHC-HSK-A063-14-090-1-0-A | 31375071  |              |
| 63    | 14,0           | 27,0           | 34,0           | 120,0          | 46,0           | 10,0           | 56,2           | M10x1 | 130             | MHC-HSK-A063-14-120-1-0-A | 31441126  |              |
| 63    | 16,0           | 27,0           | 34,0           | 95,0           | 49,0           | 10,0           | 63,1           | M12x1 | 200             | MHC-HSK-A063-16-095-1-0-A | 31270555  |              |
| 63    | 16,0           | 27,0           | 34,0           | 120,0          | 49,0           | 10,0           | 56,2           | M12x1 | 200             | MHC-HSK-A063-16-120-1-0-A | 31441127  |              |
| 63    | 18,0           | 33,0           | 42,0           | 95,0           | 49,0           | 10,0           | 63,0           | M12x1 | 250             | MHC-HSK-A063-18-095-1-0-A | 31375072  |              |
| 63    | 18,0           | 33,0           | 42,0           | 120,0          | 49,0           | 10,0           | 68,9           | M12x1 | 250             | MHC-HSK-A063-18-120-1-0-A | 31441128  |              |
| 63    | 20,0           | 33,0           | 42,0           | 100,0          | 51,0           | 10,0           | 68,9           | M16x1 | 330             | MHC-HSK-A063-20-100-1-0-A | 31229440  |              |
| 63    | 20,0           | 33,0           | 42,0           | 120,0          | 51,0           | 10,0           | 68,9           | M16x1 | 330             | MHC-HSK-A063-20-120-1-0-A | 31441129  |              |
| 63    | 25,0           | 44,0           | 52,5           | 115,0          | 57,0           | 10,0           | 85,4           | M16x1 | 500             | MHC-HSK-A063-25-115-1-0-A | 31396186  |              |
| 63    | 32,0           | 44,0           | 52,5           | 120,0          | 61,0           | 10,0           | 90,1           | M16x1 | 650             | MHC-HSK-A063-32-120-1-0-A | 31396187  |              |
| 100   | 6,0            | 21,0           | 27,0           | 85,0           | 37,0           | 10,0           | 38,7           | M5    | 18              | MHC-HSK-A100-06-085-1-0-A | 31344789  | in stock     |
| 100   | 6,0            | 21,0           | 27,0           | 120,0          | 37,0           | 10,0           | 48,9           | M5    | 18              | MHC-HSK-A100-06-120-1-0-A | 31496256  | CW 20/2024   |
| 100   | 8,0            | 21,0           | 27,0           | 85,0           | 37,0           | 10,0           | 38,7           | M6    | 35              | MHC-HSK-A100-08-085-1-0-A | 31344860  | in stock     |
| 100   | 8,0            | 21,0           | 27,0           | 120,0          | 37,0           | 10,0           | 48,9           | M6    | 35              | MHC-HSK-A100-08-120-1-0-A | 31496257  | CW 20/2024   |
| 100   | 10,0           | 24,0           | 32,0           | 90,0           | 41,0           | 10,0           | 53,7           | M8x1  | 60              | MHC-HSK-A100-10-090-1-0-A | 31344862  | in stock     |
| 100   | 10,0           | 24,0           | 32,0           | 120,0          | 41,0           | 10,0           | 61,6           | M8x1  | 60              | MHC-HSK-A100-10-120-1-0-A | 31496258  | CW 20/2024   |
| 100   | 12,0           | 24,0           | 32,0           | 95,0           | 46,0           | 10,0           | 58,6           | M10x1 | 90              | MHC-HSK-A100-12-095-1-0-A | 31344863  | in stock     |
| 100   | 12,0           | 24,0           | 32,0           | 120,0          | 46,0           | 10,0           | 61,6           | M10x1 | 90              | MHC-HSK-A100-12-120-1-0-A | 31496259  | CW 20/2024   |



## UNIQ® DReaM Chuck, 4.5° | With axial tool length adjustment, clamping insertion in the collar, shank HSK-A according to DIN 69893-1

| HSK-A | Dimensions     |                |                |                |                |                |                | G     | Torque *<br>[Nm] | Specification             | Order No. | Availability |
|-------|----------------|----------------|----------------|----------------|----------------|----------------|----------------|-------|------------------|---------------------------|-----------|--------------|
|       | d <sub>1</sub> | d <sub>2</sub> | d <sub>3</sub> | l <sub>1</sub> | l <sub>2</sub> | l <sub>3</sub> | l <sub>4</sub> |       |                  |                           |           |              |
| 100   | 14,0           | 27,0           | 34,0           | 95,0           | 46,0           | 10,0           | 57,2           | M10x1 | 130              | MHC-HSK-A100-14-095-1-0-A | 31344864  | in stock     |
| 100   | 14,0           | 27,0           | 34,0           | 120,0          | 46,0           | 10,0           | 56,2           | M10x1 | 130              | MHC-HSK-A100-14-120-1-0-A | 31496300  | CW 20/2024   |
| 100   | 16,0           | 27,0           | 34,0           | 100,0          | 49,0           | 10,0           | 63,1           | M12x1 | 200              | MHC-HSK-A100-16-100-1-0-A | 31344865  | in stock     |
| 100   | 16,0           | 27,0           | 34,0           | 120,0          | 49,0           | 10,0           | 56,2           | M12X1 | 200              | MHC-HSK-A100-16-120-1-0-A | 31496301  | CW 20/2024   |
| 100   | 18,0           | 33,0           | 42,0           | 100,0          | 49,0           | 10,0           | 63,0           | M12x1 | 250              | MHC-HSK-A100-18-100-1-0-A | 31344866  | in stock     |
| 100   | 18,0           | 33,0           | 42,0           | 120,0          | 49,0           | 10,0           | 68,9           | M12X1 | 250              | MHC-HSK-A100-18-120-1-0-A | 31496302  | CW 20/2024   |
| 100   | 20,0           | 33,0           | 42,0           | 105,0          | 51,0           | 10,0           | 68,9           | M16x1 | 330              | MHC-HSK-A100-20-105-1-0-A | 31344867  | in stock     |
| 100   | 20,0           | 33,0           | 42,0           | 120,0          | 51,0           | 10,0           | 68,9           | M16X1 | 330              | MHC-HSK-A100-20-120-1-0-A | 31496303  | CW 20/2024   |
| 100   | 25,0           | 44,0           | 53,0           | 115,0          | 57,0           | 10,0           | 80,7           | M16x1 | 500              | MHC-HSK-A100-25-115-1-0-A | 31344868  | in stock     |
| 100   | 32,0           | 44,0           | 53,0           | 120,0          | 61,0           | 10,0           | 84,6           | M16x1 | 650              | MHC-HSK-A100-32-120-1-0-A | 31344869  | in stock     |

\* Permissible transmittable torque.

Dimensions in mm.

Application: For clamping tools with smooth cylindrical shanks to DIN 1835 Form A, DIN 6535 Form HA as well as with recesses to DIN 1835 Form B, E and DIN 6535 Form HB, HE directly and with reducing sleeve in the clamping diameter. The clamping diameter is designed for a shank tolerance h6.

Scope of delivery: With length adjustment screw, without coolant tube.

Design: Highest tool life and production quality when using plain shanks according to DIN 1835 form A and DIN 6535 form HA. With a cantilever length of 2.5xD (max. 50 mm) concentricity 3 µm. When using cylindrical shanks with inclined clamping surface

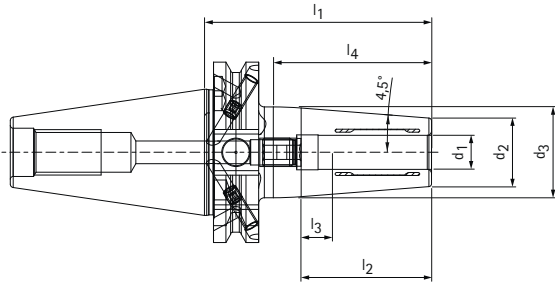
(form E and form HE), the accuracy may be impaired. Torque transmission perfectly tailored to your application.

Note: Coolant supply via central through hole. Coolant tubes, code carriers, reducing sleeves for reducing the clamping diameter (when using the reducing sleeve, an impairment of the accuracy is possible) see category accessories, spare parts and measuring equipment. Length adjustment screws available on request.

Balance quality: G 2.5 at 25,000 min<sup>-1</sup> as delivered.

## UNIQ® DReaM Chuck, 4.5°

With axial tool length adjustment, clamping insertion in the collar  
Shank hollow shank taper A according to ISO 7388-1 form AD/AF



| SK | Dimensions     |                |                |                |       |                |                |                | G     | Torque *<br>[Nm] | Specification          | Order No. | Availability |
|----|----------------|----------------|----------------|----------------|-------|----------------|----------------|----------------|-------|------------------|------------------------|-----------|--------------|
|    | d <sub>1</sub> | d <sub>2</sub> | d <sub>3</sub> | d <sub>4</sub> |       | l <sub>2</sub> | l <sub>3</sub> | l <sub>4</sub> |       |                  |                        |           |              |
| 40 | 6,0            | 21,0           | 27,0           | -              | 80,0  | 37,0           | 10,0           | 55,7           | M5    | 18               | MHC-SK040-06-080-3-0-A | 31344880  | in stock     |
| 40 | 6,0            | 21,0           | 27,0           | -              | 120,0 | 37,0           | 10,0           | 48,9           | M5    | 18               | MHC-SK040-06-120-3-0-A | 31441418  |              |
| 40 | 8,0            | 21,0           | 27,0           | -              | 80,0  | 37,0           | 10,0           | 55,7           | M6    | 35               | MHC-SK040-08-080-3-0-A | 31344881  |              |
| 40 | 8,0            | 21,0           | 27,0           | -              | 120,0 | 37,0           | 10,0           | 48,9           | M6    | 35               | MHC-SK040-08-120-3-0-A | 31441419  |              |
| 40 | 10,0           | 24,0           | 32,0           | -              | 80,0  | 41,0           | 10,0           | 55,7           | M8x1  | 60               | MHC-SK040-10-080-3-0-A | 31344882  |              |
| 40 | 10,0           | 24,0           | 32,0           | -              | 120,0 | 41,0           | 10,0           | 61,6           | M8x1  | 60               | MHC-SK040-10-120-3-0-A | 31441490  |              |
| 40 | 12,0           | 24,0           | 32,0           | -              | 80,0  | 46,0           | 10,0           | 55,7           | M10x1 | 90               | MHC-SK040-12-080-3-0-A | 31344883  |              |
| 40 | 12,0           | 24,0           | 32,0           | -              | 120,0 | 46,0           | 10,0           | 61,6           | M10x1 | 90               | MHC-SK040-12-120-3-0-A | 31441491  |              |
| 40 | 14,0           | 27,0           | 34,0           | -              | 80,0  | 46,0           | 10,0           | 55,8           | M10x1 | 130              | MHC-SK040-14-080-3-0-A | 31375087  |              |
| 40 | 14,0           | 27,0           | 34,0           | -              | 120,0 | 46,0           | 10,0           | 56,2           | M10x1 | 130              | MHC-SK040-14-120-3-0-A | 31441492  |              |
| 40 | 16,0           | 27,0           | 34,0           | -              | 80,0  | 49,0           | 10,0           | 55,8           | M12x1 | 200              | MHC-SK040-16-080-3-0-A | 31344884  |              |
| 40 | 16,0           | 27,0           | 34,0           | -              | 120,0 | 49,0           | 10,0           | 56,2           | M12x1 | 200              | MHC-SK040-16-120-3-0-A | 31441493  |              |
| 40 | 18,0           | 33,0           | 42,0           | -              | 80,0  | 49,0           | 10,0           | 57,2           | M12x1 | 250              | MHC-SK040-18-080-3-0-A | 31375088  |              |
| 40 | 18,0           | 33,0           | 42,0           | -              | 120,0 | 49,0           | 10,0           | 68,9           | M12x1 | 250              | MHC-SK040-18-120-3-0-A | 31441494  |              |
| 40 | 20,0           | 33,0           | 42,0           | -              | 80,0  | 51,0           | 10,0           | 57,2           | M16x1 | 330              | MHC-SK040-20-080-3-0-A | 31344885  |              |
| 40 | 20,0           | 33,0           | 42,0           | -              | 120,0 | 51,0           | 10,0           | 68,9           | M16x1 | 330              | MHC-SK040-20-120-3-0-A | 31441495  |              |
| 40 | 25,0           | 44,0           | 53,0           | 49,0           | 100,0 | 57,0           | 10,0           | 58,7           | M10x1 | 500              | MHC-SK040-25-100-3-0-A | 31396194  |              |
| 40 | 32,0           | 44,0           | 53,0           | -              | 100,0 | 61,0           | 10,0           | 58,3           | M10x1 | 650              | MHC-SK040-32-100-3-0-A | 31396195  |              |

\* Permissible transmittable torque.

Dimensions in mm.

Application: For clamping tools with smooth cylindrical shanks to DIN 1835 Form A, DIN 6535 Form HA as well as with recesses to DIN 1835 Form B, E and DIN 6535 Form HB, HE directly and with reducing sleeve in the clamping diameter. The clamping diameter is designed for a shank tolerance h6.

Scope of delivery: With length adjustment screw, without coolant tube.

Design: Highest tool life and production quality when using smooth shanks according to DIN 1835 form A and DIN 6535 form HA.

With a length of 2.5xD (max. 50 mm) concentricity 3 µm. When using cylindrical shanks

with inclined clamping surface (form E and form HE), the accuracy may be impaired.

Torque transmission perfectly tailored to your application.

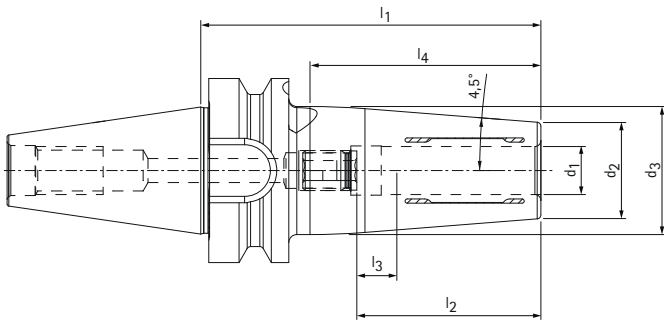
Note: Coolant supply via central through hole. Coolant tubes, code carriers, reducing sleeves for reducing the clamping diameter (when using the reducing sleeve, an impairment of the accuracy is possible) see category accessories, spare parts and measuring equipment.

Length adjustment screws available on request.

Balance quality: G 2.5 at 25,000 min<sup>-1</sup> as delivered.

## UNIQ® DReaM Chuck, 4.5°

With axial tool length adjustment, clamping insertion in the collar  
Shank BT according to ISO 7388-2 form JD/JF (JIS B 6339)



| BT   | Dimensions     |                |                |                |                |                |                | G     | Torque*<br>[Nm] | Specification          | Order No. | Availability |
|------|----------------|----------------|----------------|----------------|----------------|----------------|----------------|-------|-----------------|------------------------|-----------|--------------|
|      | d <sub>1</sub> | d <sub>2</sub> | d <sub>3</sub> | l <sub>1</sub> | l <sub>2</sub> | l <sub>3</sub> | l <sub>4</sub> |       |                 |                        |           |              |
| 30** | 6,0            | 21,0           | 27,0           | 85,0           | 37,0           | 10,0           | 57,7           | M5    | 18              | MHC-BT030-06-085-1-0-A | 31280360  | in stock     |
| 30** | 8,0            | 21,0           | 27,0           | 85,0           | 37,0           | 10,0           | 57,7           | M6    | 35              | MHC-BT030-08-085-1-0-A | 31280361  |              |
| 30** | 10,0           | 24,0           | 32,0           | 85,0           | 41,0           | 10,0           | 57,7           | M8x1  | 60              | MHC-BT030-10-085-1-0-A | 31280362  |              |
| 30** | 12,0           | 24,0           | 32,0           | 85,0           | 46,0           | 10,0           | 57,7           | M10x1 | 90              | MHC-BT030-12-085-1-0-A | 31280365  |              |
| 30** | 14,0           | 27,0           | 34,0           | 85,0           | 46,0           | 10,0           | 57,2           | M10x1 | 130             | MHC-BT030-14-085-1-0-A | 31375079  |              |
| 30** | 16,0           | 27,0           | 34,0           | 85,0           | 49,0           | 10,0           | 57,2           | M10x1 | 200             | MHC-BT030-16-085-1-0-A | 31280366  |              |
| 30** | 18,0           | 33,0           | 42,0           | 85,0           | 49,0           | 10,0           | 57,5           | M12x1 | 250             | MHC-BT030-18-085-1-0-A | 31375080  |              |
| 30** | 20,0           | 33,0           | 42,0           | 85,0           | 51,0           | 10,0           | 57,5           | M10x1 | 330             | MHC-BT030-20-085-1-0-A | 31280367  |              |
| 40   | 6,0            | 21,0           | 27,0           | 90,0           | 37,0           | 10,0           | 57,7           | M5    | 18              | MHC-BT040-06-090-3-0-A | 31344904  | in stock     |
| 40   | 6,0            | 21,0           | 27,0           | 120,0          | 37,0           | 10,0           | 48,9           | M5    | 18              | MHC-BT040-06-120-3-0-A | 31496324  | CW 20/2024   |
| 40   | 8,0            | 21,0           | 27,0           | 90,0           | 37,0           | 10,0           | 57,7           | M6    | 35              | MHC-BT040-08-090-3-0-A | 31344905  | in stock     |
| 40   | 8,0            | 21,0           | 27,0           | 120,0          | 37,0           | 10,0           | 48,9           | M6    | 35              | MHC-BT040-08-120-3-0-A | 31496325  | CW 20/2024   |
| 40   | 10,0           | 24,0           | 32,0           | 90,0           | 41,0           | 10,0           | 57,7           | M8x1  | 60              | MHC-BT040-10-090-3-0-A | 31344906  | in stock     |
| 40   | 10,0           | 24,0           | 32,0           | 120,0          | 41,0           | 10,0           | 61,6           | M8x1  | 60              | MHC-BT040-10-120-3-0-A | 31496326  | CW 20/2024   |
| 40   | 12,0           | 24,0           | 32,0           | 90,0           | 46,0           | 10,0           | 57,7           | M10x1 | 90              | MHC-BT040-12-090-3-0-A | 31344907  | in stock     |
| 40   | 12,0           | 24,0           | 32,0           | 120,0          | 46,0           | 10,0           | 61,6           | M10x1 | 90              | MHC-BT040-12-120-3-0-A | 31496327  | CW 20/2024   |
| 40   | 14,0           | 27,0           | 34,0           | 90,0           | 46,0           | 10,0           | 57,2           | M10x1 | 130             | MHC-BT040-14-090-3-0-A | 31396128  | in stock     |
| 40   | 14,0           | 27,0           | 34,0           | 120,0          | 46,0           | 10,0           | 56,2           | M10x1 | 130             | MHC-BT040-14-120-3-0-A | 31496328  | CW 20/2024   |
| 40   | 16,0           | 27,0           | 34,0           | 90,0           | 49,0           | 10,0           | 57,2           | M12x1 | 200             | MHC-BT040-16-090-3-0-A | 31344908  | in stock     |
| 40   | 16,0           | 27,0           | 34,0           | 120,0          | 49,0           | 10,0           | 56,2           | M12x1 | 200             | MHC-BT040-16-120-3-0-A | 31496329  | CW 20/2024   |
| 40   | 18,0           | 33,0           | 42,0           | 90,0           | 49,0           | 10,0           | 57,5           | M12x1 | 250             | MHC-BT040-18-090-3-0-A | 31396129  | in stock     |
| 40   | 18,0           | 33,0           | 42,0           | 120,0          | 49,0           | 10,0           | 68,9           | M12x1 | 250             | MHC-BT040-18-120-3-0-A | 31496330  | CW 20/2024   |
| 40   | 20,0           | 33,0           | 42,0           | 90,0           | 51,0           | 10,0           | 57,5           | M16x1 | 330             | MHC-BT040-20-090-3-0-A | 31344909  | in stock     |
| 40   | 20,0           | 33,0           | 42,0           | 120,0          | 51,0           | 10,0           | 68,9           | M16x1 | 330             | MHC-BT040-20-120-3-0-A | 31496331  | CW 20/2024   |
| 40   | 25,0           | 44,0           | 53,0           | 100,0          | 57,0           | 10,0           | 67,9           | M16x1 | 500             | MHC-BT040-25-100-3-0-A | 31396140  | in stock     |
| 40   | 32,0           | 44,0           | 53,0           | 100,0          | 61,0           | 10,0           | 67,9           | M16x1 | 650             | MHC-BT040-32-100-3-0-A | 31396141  |              |

\* Permissible transmittable torque.

\*\* Design: Steep taper size is not available in combination design JD/JF

Dimensions in mm.

Application: For clamping tools with smooth cylindrical shanks to DIN 1835 Form A, DIN 6535 Form HA as well as with recesses to DIN 1835 Form B, E and DIN 6535 Form HB, HE directly and with reducing sleeve in the clamping diameter. The clamping diameter is designed for a shank tolerance h6.

Scope of delivery: With length adjustment screw, without tightening bolt.

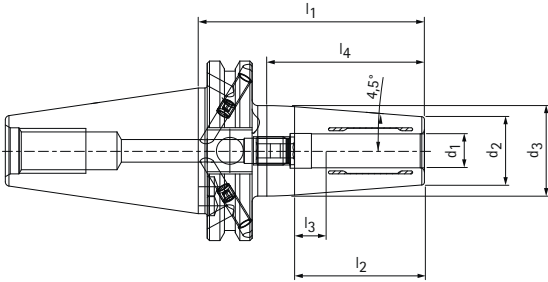
Design: Highest tool life and manufacturing quality when using smooth shanks according to DIN 1835 form A and DIN 6535 form HA. With an overhang length of 2.5xD

(max. 50 mm) concentricity accuracy 3 µm. When using cylindrical shanks with inclined clamping surface (form E and form HE), the accuracy may be impaired. Torque transmission perfectly tailored to your application.

Note: Coolant supply via central through hole. Tightening bolts, reducing sleeves for reducing the clamping diameter. (When using the reducing sleeve, accuracy may be impaired) see category accessories and spare parts. Length adjustment screws available on request. Balance quality: G 2.5 at 25,000 min<sup>-1</sup> as delivered.

## UNIQ® DReaM Chuck, 4.5°

With axial tool length adjustment, clamping insertion in the collar  
Shank "CAT" according to ASME B5.50-1994



| CAT | Dimensions     |                |                |                |                |                |                | G     | Torque*<br>[Nm] | Specification           | Order No. | Availability |
|-----|----------------|----------------|----------------|----------------|----------------|----------------|----------------|-------|-----------------|-------------------------|-----------|--------------|
|     | d <sub>1</sub> | d <sub>2</sub> | d <sub>3</sub> | l <sub>1</sub> | l <sub>2</sub> | l <sub>3</sub> | l <sub>4</sub> |       |                 |                         |           |              |
| 40  | 6,0            | 21,0           | 27,0           | 80,0           | 37,0           | 10,0           | 55,7           | M5    | 18              | MHC-CAT040-06-080-3-0-A | 31344892  | in stock     |
| 40  | 8,0            | 21,0           | 27,0           | 80,0           | 37,0           | 10,0           | 55,7           | M6    | 35              | MHC-CAT040-08-080-3-0-A | 31344893  |              |
| 40  | 10,0           | 24,0           | 32,0           | 80,0           | 41,0           | 10,0           | 55,7           | M8x1  | 60              | MHC-CAT040-10-080-3-0-A | 31344894  |              |
| 40  | 12,0           | 24,0           | 32,0           | 80,0           | 46,0           | 10,0           | 55,7           | M10x1 | 90              | MHC-CAT040-12-080-3-0-A | 31344895  |              |
| 40  | 14,0           | 27,0           | 34,0           | 80,0           | 46,0           | 10,0           | 55,8           | M10x1 | 130             | MHC-CAT040-14-080-3-0-A | 31375095  |              |
| 40  | 16,0           | 27,0           | 34,0           | 80,0           | 49,0           | 10,0           | 55,8           | M12x1 | 200             | MHC-CAT040-16-080-3-0-A | 31344896  |              |
| 40  | 18,0           | 33,0           | 42,0           | 80,0           | 49,0           | 10,0           | 57,2           | M12x1 | 250             | MHC-CAT040-18-080-3-0-A | 31375096  |              |
| 40  | 20,0           | 33,0           | 42,0           | 80,0           | 51,0           | 10,0           | 57,2           | M16x1 | 330             | MHC-CAT040-20-080-3-0-A | 31344897  |              |

\* Permissible transmittable torque.

Dimensions in mm.

Application: For clamping tools with smooth cylindrical shanks to DIN 1835 Form A, DIN 6535 Form HA as well as with recesses to DIN 1835 Form B, E and DIN 6535 Form HB, HE directly and with reducing sleeve in the clamping diameter. The clamping diameter is designed for a shank tolerance h6.

Scope of delivery: With length adjustment screw, without coolant tube.

Design: Highest tool life and production quality when using smooth shanks according to DIN 1835 form A and DIN 6535 form HA.

With a length of 2.5xD (max. 50 mm) concentricity 3 µm. When using cylindrical shanks

with inclined clamping surface (form E and form HE), the accuracy may be impaired.

Torque transmission perfectly tailored to your application.

Note: Coolant supply via central through hole. Coolant tubes, code carriers, reducing sleeves for reducing the clamping diameter (when using the reducing sleeve, an impairment of the accuracy is possible) see category accessories, spare parts and measuring equipment.

Length adjustment screws available on request.

Balance quality: G 2.5 at 25,000 min<sup>-1</sup> as delivered.



Discover tool and service solutions now that will move you forward:

## BORE MACHINING

REAMING | FINE BORING

DRILLING FROM SOLID | BORING | COUNTERSINKING

## MILLING

## CLAMPING

## TURNING

## ACTUATING

## SETTING | MEASURING | DISPENSING

## SERVICES

FOLLOW US

